



TEAM GB

Haven

HOLIDAY HOME
OWNERSHIP PARTNER

Holiday home ownership at

Burnham-on-Sea



Your safe Haven awaits

As life begins to move to a new normal, we're welcoming back our owners and guests as they look to enjoy a breath of fresh air at our Haven parks. We've made significant changes and introduced an enhanced cleaning team on park, to ensure that we maintain our high level of standards so that everyone on our parks remains safe and secure. If you're interested in holiday home ownership, we're open and ready to show you around and help you find your dream home from home.



A Haven holiday home is the ideal choice for anyone who would like to enjoy a lifetime of holidays on the Great British coast. We're socially distanced by nature, which is rather handy at the moment. Our holiday homes provide self-contained, self-catering accommodation and they are well spaced apart from one another too. Our parks are dotted along the stunning British coastline, so you and your family can explore miles of beautiful beaches, coastline and cliffs and then relax and unwind in your brand new home from home.



Why Haven ownership is a safe option

If owning a holiday home was on your agenda, now's a great time to start enjoying a lifetime of holidays on the Great British coast.

Here are the top reasons why we're a safe Haven for your home from home:

1. Family time

Your chosen caravan will be your home away from home for you and your family to enjoy as often as you like.

2. Open safe environment

Our holiday homes are self-contained and well spaced to allow a safe environment to maintain social distancing.

3. Strict cleanliness measures

All our holiday homes, facilities and outdoor areas are cleaned to the highest standard, our team are fully briefed on keeping visitors, and themselves, completely safe.



4. Beaches and open spaces

Our parks are blessed with beautiful surroundings along the Great British coast with wide open spaces and some are even near to national parks. Wherever you choose, you'll be able to enjoy a breath of fresh air from your new holiday home.

5. Outdoor activities

Our parks have an array of outdoor activities to enjoy so there's plenty you can do to enjoy fresh air and quality time.



Welcome to a place you'll love for years to come



Burnham-on-Sea Holiday Village nestles right next to the seaside resort town of the same name. If you're looking for a good old-fashioned beach holiday, we've got everything you want right here. Our gorgeous 95-acre grounds are perfect for relaxing with friends and family. And our two superbly stocked coarse fishing lakes are a joy for active anglers and laze-abouters alike. If you do fancy getting out and about, you'll find famous local landmarks and lovely rural scenery abounds.



Denise Lewis - one of Haven's official national ambassadors

Proud partner of Team GB

As an official partner of Team GB, we're proud to be supporting the incredible athletes on their journey to compete at the Tokyo Olympic Games.

With a dazzling array of activities we're doing everything we can to inspire the next generation of athletes across the UK.

Find inside...

Page

- 6** Discover the region
- 8** At the park – fun for everyone
- 10** The perks of ownership
- 12** Your home from home
- 14** Buying your dream holiday home
- 16** Your questions answered

Our best bits

- Wander into Burnham-on-Sea for traditional seaside charm
- Our two private lakes are chock-full with some of the best fishing in Somerset
- Venture out to explore the quiet sandy beaches and wild open landscapes of Somerset
- Discover legendary local landmarks, like Cheddar Gorge, Wookey Hole and the Grand Pier

Get the full story at burnhamholidayvillage.com



A taste of the country with the sound of the sea

Unspoilt beauty

There's so much more to Somerset than strong cider and Cheddar cheese – although they make a delicious introduction to this glorious county. You'll find golden beaches, dramatic rocky landscapes and heathery moors here.

There are an incredible 72 nature reserves. Two of the country's largest areas of natural beauty – the Mendips and the Quantocks – are close at hand. Or a little further afield are beautiful Bath, historic Wells or mythical medieval Glastonbury.



Weston-super-Mare Pier



Exmoor National Park



West Somerset Railway

Local spots to explore

- Grab your bucket and spade and head to the seaside town of Burnham-on-Sea
- For world-renowned caving, take a trip to Cheddar Gorge
- Ride a real-life steam train on the West Somerset Railway to Minehead
- Get all the candyfloss, ice cream and arcades you can handle at the Grand Pier in Weston-super-Mare
- Let the little ones hop on the Caterpillar Coaster at the Animal Farm Adventure Park
- Spend a day (or more) in Exmoor for a glimpse of wild ponies and beautiful rare butterflies

Come home every time you visit

Once you join the close-knit community at our park, you'll always have a home from home at Burnham-on-Sea. You can build a new group of friends and a lifetime of memories all in one place. And we're always making improvements to our facilities to keep your home happy for years to come.

Never a dull day, rain or shine

Slap bang in the middle of the Somerset coast; our lovely landscaped park is just brimful of fun for you and the little ones. Our plush heated outdoor pool is ready for a splash about on a sunny day – or if you prefer a more relaxing option, take advantage of our two well-stocked coarse fishing lakes.

For the kids there's archery, fencing, football, with an all-weather sports court and range...and for the very bravest souls, our climbing wall and scarifying Leap of Faith.



- Our heated indoor pool's packed with flumes and fun features – and our outdoor pool's perfect for a sunny day
- Our fishing lakes are some of the best in Somerset, with a tackle lodge full of... well, tackle
- Bring a racket or borrow one to have a swing at our tennis court
- Encourage the little ones to get creative with Pic 'n' Paint pottery and Sand Art



All for owners:

Unwind with a drink or a cuppa on a comfy sofa in our Owners' Lounge and terrace.

Or work away your worries in our owners-only gym. You can do as little or as much as you like.

Some activities and facilities have an extra charge. Height and/or age restrictions may apply. The availability of facilities may be impacted by government restrictions.

Join our neighbourhood of new friends

When you buy a holiday home at our park, you'll get more than just the perfect place to spend time. Return week after week, year after year to new and familiar faces, in a friendly place you all know and love.

There's a calendar of events we put on just for our owners. Unwind with new friends (soon to be lifelong ones!) at faves like our Party Nights and Experience Days.

Got an interest in common? Make a date to share it. It could be at our exclusive Wine Club, or you might prefer our BBQs, sports days, coffee mornings, or Bake Off events. Whatever your thing is, share it for years to come.

Your Privilege Card

Make yourself even more at home with your owners' Privilege Card. You can use it almost anywhere on your park. You'll get 15% off* in our bars, restaurants and shops, plus pay half-price for all leisure activities, and get entry into all our venues for nothing at all.

We'll give you 10 Privilege Cards (including your own) to share with your nearest and dearest, so you can spread the savings around to multiply the fun.



"Being a holiday home owner allows us to get away from the hustle and bustle of a busy week whenever we want to. Spending quality time together week after week is important to us."

Paul and Tina Hall, owners at Burnham-on-Sea for 3 years

Being an owner means:

- A selection of owner only events to choose from
- 10 Privilege Cards so you and your favourite people can enjoy the park
- Making the most of our events, including: weekend experiences, park exclusives, out and abouts and community events
- 15% off* in our bars, restaurants and shops
- Half-price leisure activities
- All the help you need from our Experience team

*Terms and conditions apply. Please ask us for full details. The availability of facilities may be impacted by government restrictions.

Your holiday home from home



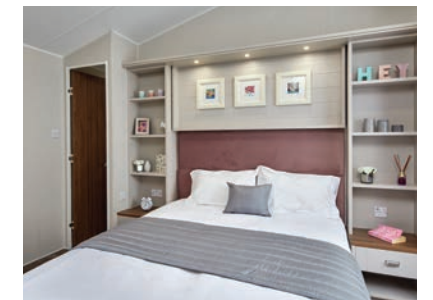
Having your very own holiday home means that you can come back again and again to a place you really love.

Get to know all the unique quirks and secret treasures of the surrounding region, and grow yourself some roots among a friendly community. And for total peace of mind, your place will have free warranty cover.

Handpicked for you

Everyone's perfect holiday home is different. Need extra space for a family full of sharp elbows? Or super-sized storage to keep everyone's stuff straight? Or perhaps you'd prefer to keep it simple and save your pennies. We've got loads of different models to make sure you find what you need.

Our handpicked range will help you make the right choice. We've picked these models based on our years of experience and owner feedback. They're made in the UK by top manufacturers, all with different characteristics from contemporary open-plan kitchens to Bluetooth music systems and king-size master beds. So whether you're looking for comfort, luxury or indulgence, you can find the perfect fit for you.



Your holiday home

When you buy your holiday home, we'll include everything you need to get started:

- Siting and connection of your holiday home on your chosen pitch. Pitches vary to accommodate different holiday homes.
- A full starter inventory, steps, handrails, smoke alarm, and all carpets, curtains and furniture
- A five-year warranty with new holiday homes or a two-year warranty with previously owned models



Leading holiday home manufacturers:



Buying your dream holiday home

We know that buying your very own coastal getaway is a decision that shouldn't be rushed. There's a lot to consider – and we're here to help you think it all through.

If you decide to go for it, we're always here to chat. After all, we've got over 50 years of experience – why let it go to waste? As everyone's personal situation is unique, we'll help you find the option that fits yours the best.



When thinking about buying a holiday home with Haven these are the costs you need to consider.

The caravan holiday home

This will be a one-off cost and the price will depend on the model you pick and whether it's new or pre-owned.

We'll include everything you need to get started, plus have it sited and connected on your chosen pitch. You'll receive a full starter inventory pack to help you move in straight away, and essentials such as steps, smoke alarms and a TV aerial. Plus, all new holiday homes come with a five-year warranty or a two-year warranty with pre-owned models.



The annual site fees and running costs

All homes have running costs – holiday homes are no different. So what's involved?

Annual costs include site fees, (which cover your right to occupy a park, as long as you stick to the park rules), rates, water, gas, electricity and insurance. These change from year to year, but we've used our experience to come up with estimates so you can get an idea. The example is based on 2020 site fees and running costs. 2021 costs will be published shortly.

Full year's site fees **From £5,683**
(depending on your choice of park and caravan pitch)

Site fees cover full use of park facilities, all park maintenance, landscaping, and security.

Average water charges and non-domestic rates **£570**

Average gas and electric (Inclusive of availability charge) **£336**

Insurance (Dependent on holiday home size) **From £239**

Total running costs from **£6,828**



Let your place pay for itself

With our Simply Letting service[^], your home from home can be making money being let to holidaymakers any time you're not there – which can go towards site fees and running costs. You can feel reassured that we'll look after it like our very own, checking it after every visitor leaves. We'll replace any missing standard inventory, and give a free carpet and upholstery clean when needed too.

[^]Terms and conditions apply, please ask for more details. Not available at Far Grange, Cardigan View and Garreg Wen.

To view all holiday homes for sale and our latest offers

[click here](#)

Finance options are available with a range of payment options and a low 6.9% APR (subject to status).

Your questions answered

We know you're bound to have questions. We want you to feel completely in the know about all the ins and outs of owning your dream holiday home. If you don't find what you're looking for, just give us a call, or speak to us online through live chat – we love to talk.

Why should I choose Burnham-on-Sea?

All our award-winning holiday parks are on or near the coast and packed with our special brand of activities and entertainment. Burnham-on-Sea is part of Bourne Leisure Limited, who have been running holiday parks for over 50 years and are one of the UK's leading holiday home ownership companies. So this means we're always investing more into our parks to give you a great time, all the time.

Can my friends and family visit me?

Absolutely! As an owner, you'll receive 10 Privilege Cards. So you can give your favourite people full access to all the facilities. And as we always say, 'the more, the merrier,' so if you need any extra cards, you can buy more from our Experience team.

When can I enjoy my holiday home?

Your holiday home is designed to be used for holidays, leisure breaks and recreation between 1 March and 30 November. It cannot be used as your primary residence and proof of residence will be required when you purchase.

Can I choose where my holiday home is within the park?

Of course you can. Choose your perfect plot from the list of available pitch locations to secure the ideal spot for your coastal home from home. Pitches vary to accommodate different holiday homes.

Do I own the land?

You'll be the proud owner of a holiday home, but not the land itself. Your annual fees cover your right to occupy a pitch, as long as you stick to the park rules.

What do site fees cover?

Site fees cover all of the important things that keep your dream park shipshape. This includes on-site security, park maintenance, landscaping, rubbish collection and mowing the lawns. They also cover help from our wonderful park teams.

Any other running costs I should know about?

When you're planning to buy a holiday home, you should allow for extra costs like annual site fees, non-domestic rates, water, gas, electricity, safety tests, insurance and alarm maintenance. Also, keep in mind extras you might fancy, like preparing your holiday home for winter.

Do I have to change my holiday home every 5 or 10 years?

You should be able to enjoy your holiday home for as long as you like, you just need to take good care of it and make sure it's safe and well maintained. The initial licence period for the occupation of a pitch on the park is 12 years.

Can I feel secure that the park is safe?

We have on-park security 24 hours a day. The security team regularly patrol the park and keep an eye out for any wandering youngsters. They will also refuse entry to anyone without a valid pass. Plus we offer a Park Security Alarm system to protect your holiday home for an additional fee.

Who do I ask if I've got a question or problem?

Our Experience team are always on hand to help answer any questions you may have, big or small.

What happens if I want to leave the park?

We understand that circumstances change and whatever your reason for leaving, we are here to support you. We recommend that you contact your park team first, who will be able to explain in detail the options available to you. These options include selling privately to a third party buyer for whatever price you wish, making a gift of the holiday home to a family member, or selling it off site to a third party trader. If the holiday home leaves park, additional costs to consider are disconnection and, if applicable, the cost of dismantling a veranda or the cost of a crane to remove it from its pitch. We have first refusal at your offer price if you sell the holiday home in situ, but if we decide not to purchase the holiday home, you are free to market the holiday home and introduce a private buyer. We will issue them with a new Licence Agreement. In this instance commission and VAT are payable to the park.

Can we bring our dog?

We love dogs. Get in touch with us for a list of the breeds we allow. And a heads-up: if you have a furry guest in your holiday home, it'll affect the letting grade if you decide to let with us.

Is buying a holiday home a good investment?

Buying a holiday home is really a lifestyle choice. By letting with us, you can help to offset the cost of ownership. However, because resale values will reduce over time, buying a holiday home should not be seen as an investment for the purposes of yielding an income.

Do I need a deposit?

Yes, a minimum of 10% of the value of the holiday home, or £3,000 (whichever is greater) is required as a deposit.

Is finance available?

That's a definite yes. We're here to help in any way we can – that includes a range of payment options (which are subject to status).

Is there a way to help cover the running costs of my holiday home?

Our Simply Letting service means you can earn an income* for the dates you let, along with lots of extra benefits like inventory replacement, and free carpet and upholstery cleaning when needed. Alternatively, you can let privately.

*Terms and conditions apply. Ask about our Fixed or Flexi options.

Top tips and what happens next?

Involve the family in the decisions, it'll be a place for you all to make memories together.

Find a location. Fancy a room with a view or want to be near the facilities, take your pick.

Review the costs and payment options. We go the extra mile to make our holiday homes affordable.

Collect your keys, you're part of the Haven family now! Enjoy the exclusive facilities and activities and many happy days, weeks and years with us.

Pick your perfect holiday home. There are so many models to choose from, we'll help you find your dream home from home.

There's loads to do on and off the park. Our local experts will give you some great hints and tips.

Just give us a call, or get in touch online through live chat, we'll be happy to go through it all with you. Our team will answer any questions and sort next steps. We'll also arrange the perfect time for you to visit. Don't worry: we're not the hard-sell types. We want you to enjoy your visit as much as we'll enjoy having you.

Call us on **0333 202 1472**
Visit **burnhamholidayvillage.com**

Burnham-on-Sea Holiday Village, Marine Drive, Burnham-on-Sea, Somerset, TA8 1LA

Six reasons to become an owner with us

1

You'll have the confidence of buying from a big name that you know and trust

2

The reassurance of a 30-day money-back guarantee if you change your mind

3

Our dedicated Experience team will make sure you feel at home

4

We can help with finance, and you can offset ongoing costs with our Simply Letting service

5

A great choice of holiday homes, including our own handpicked range made by leading UK manufacturers

6

Enjoy your holiday home for as long as you like without the need to change it

Call us on **0333 202 1472**

Visit **burnhamholidayvillage.com**

Burnham-on-Sea Holiday Village, Marine Drive, Burnham-on-Sea, Somerset, TA8 1LA



All offers and guarantees are subject to their individual terms and conditions. Information correct at time of print, December 2020. Park cannot be used as a permanent residence. For full terms and conditions on our call charges, please visit haven.com/terms. Bourne Leisure Limited. Registered Office: 1 Park Lane, Hemel Hempstead, Hertfordshire HP2 4YL. Registered in England (No. 04011660). Bourne Leisure Limited is authorised and regulated by the Financial Conduct Authority (Financial Services Register No. 312847)